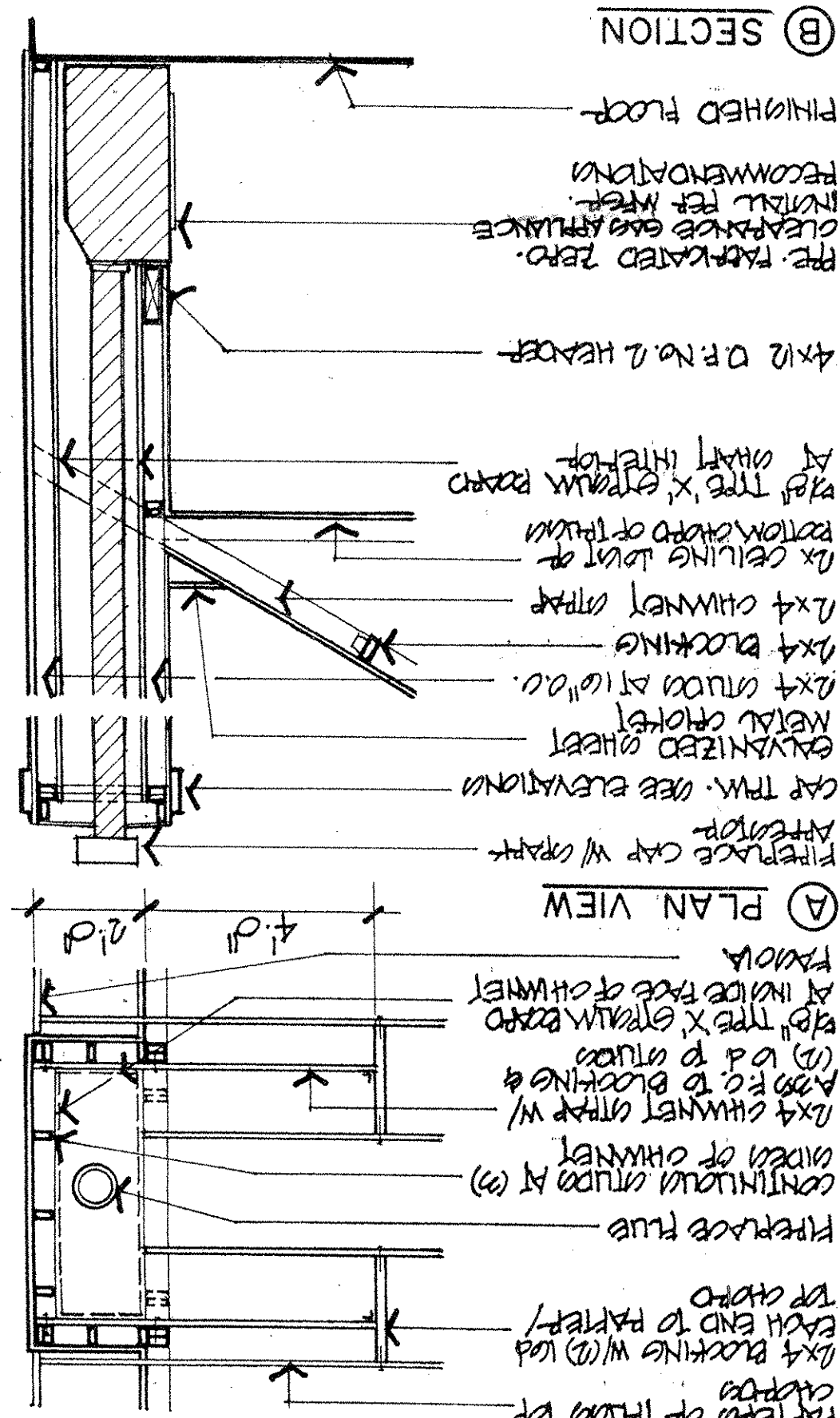
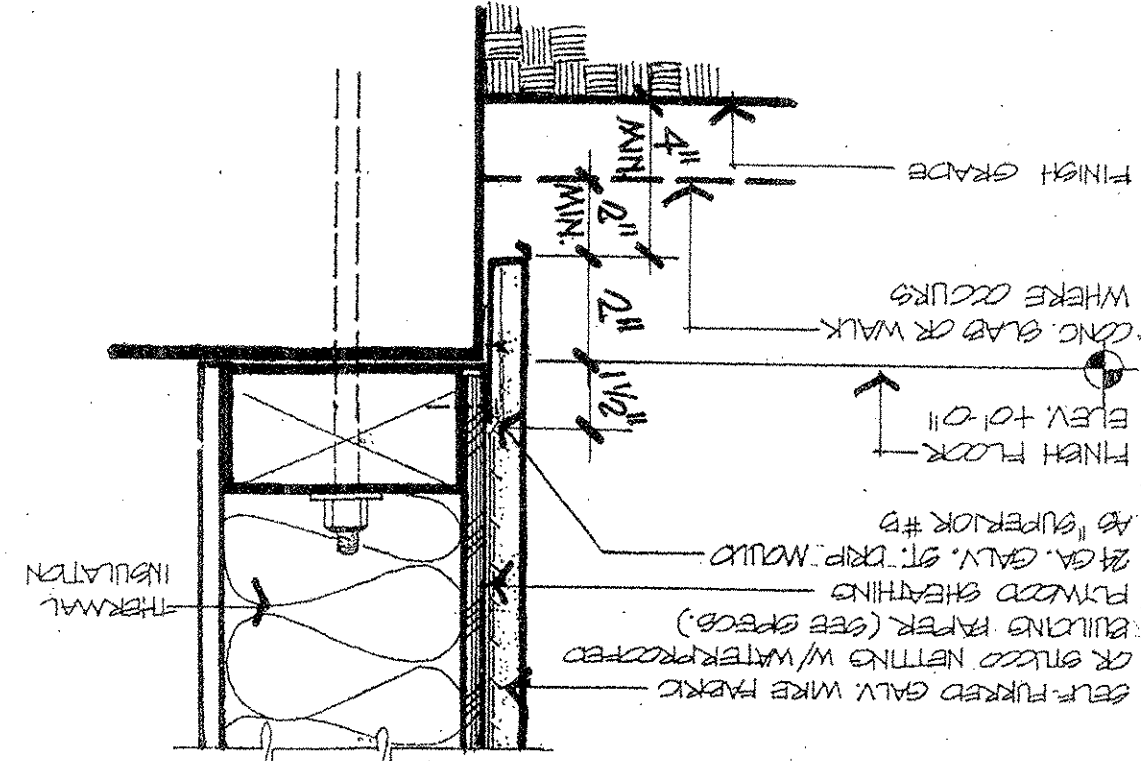


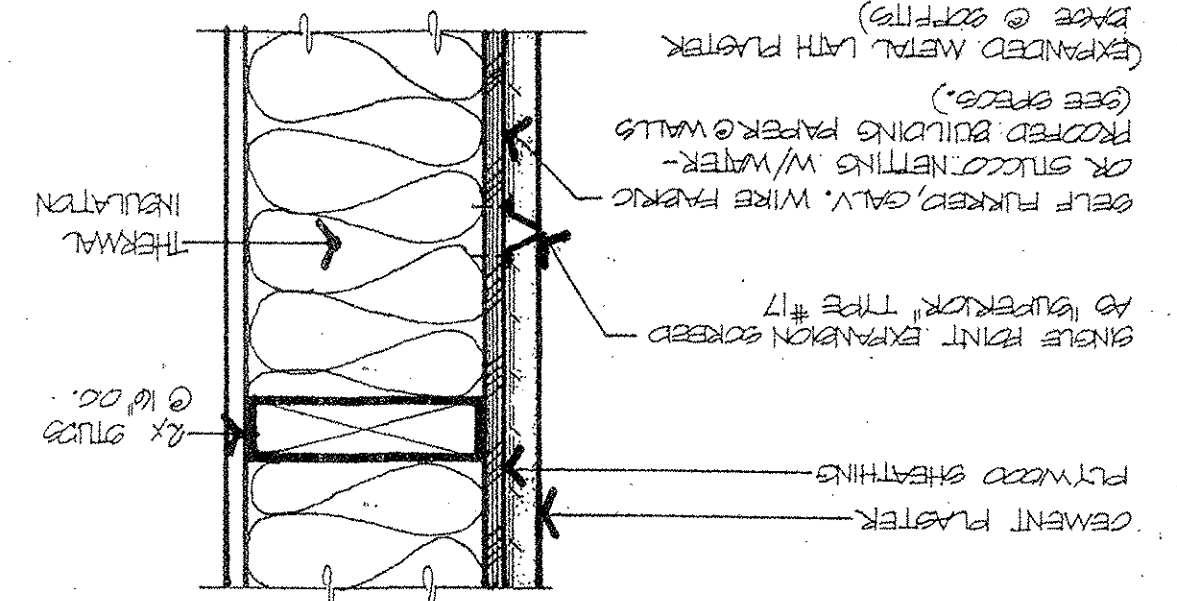
16 FIREPLACE SECTION



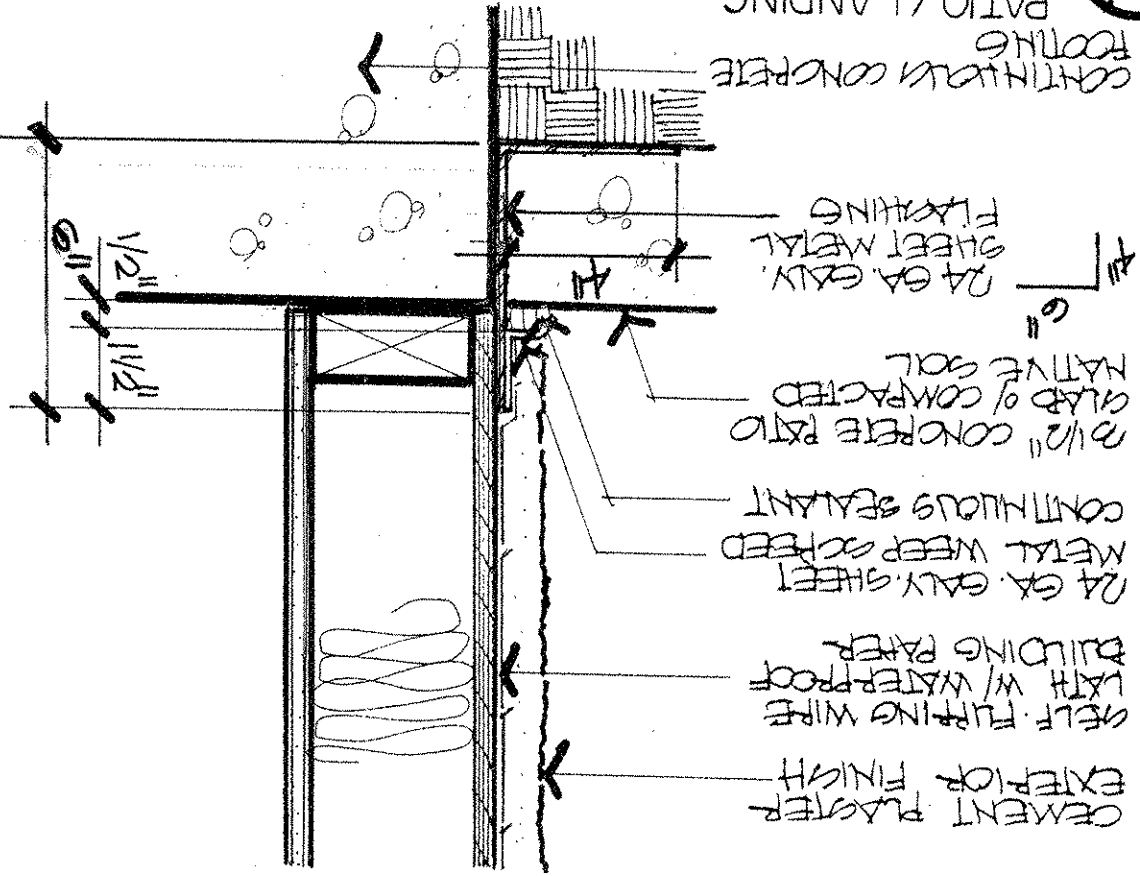
13 WEEP SCREED DETAIL



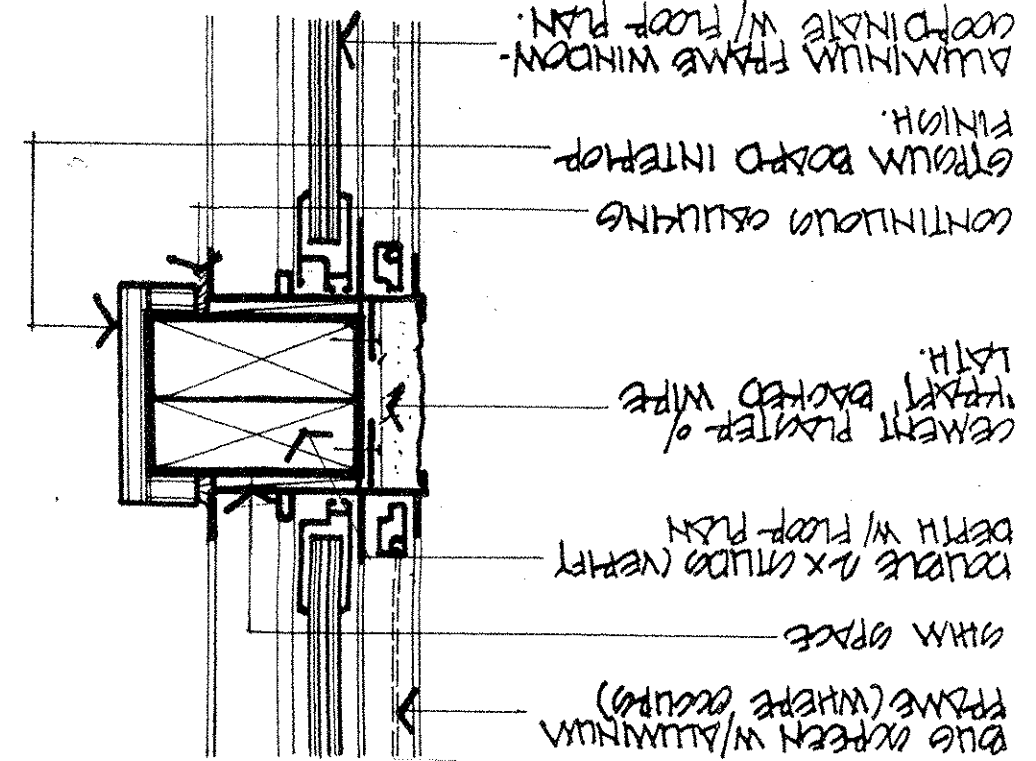
12 EXPANSION SCREED



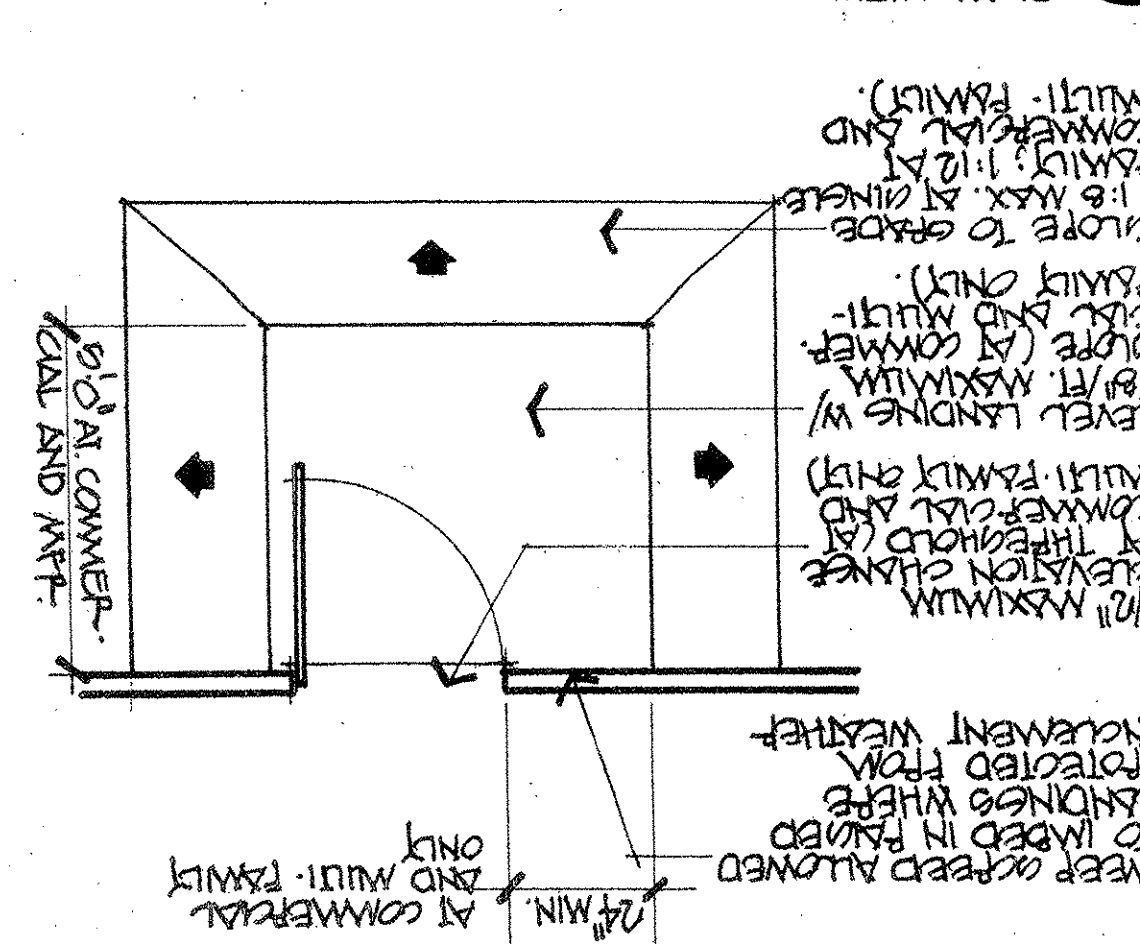
15 SILL FLASHING CONDITION



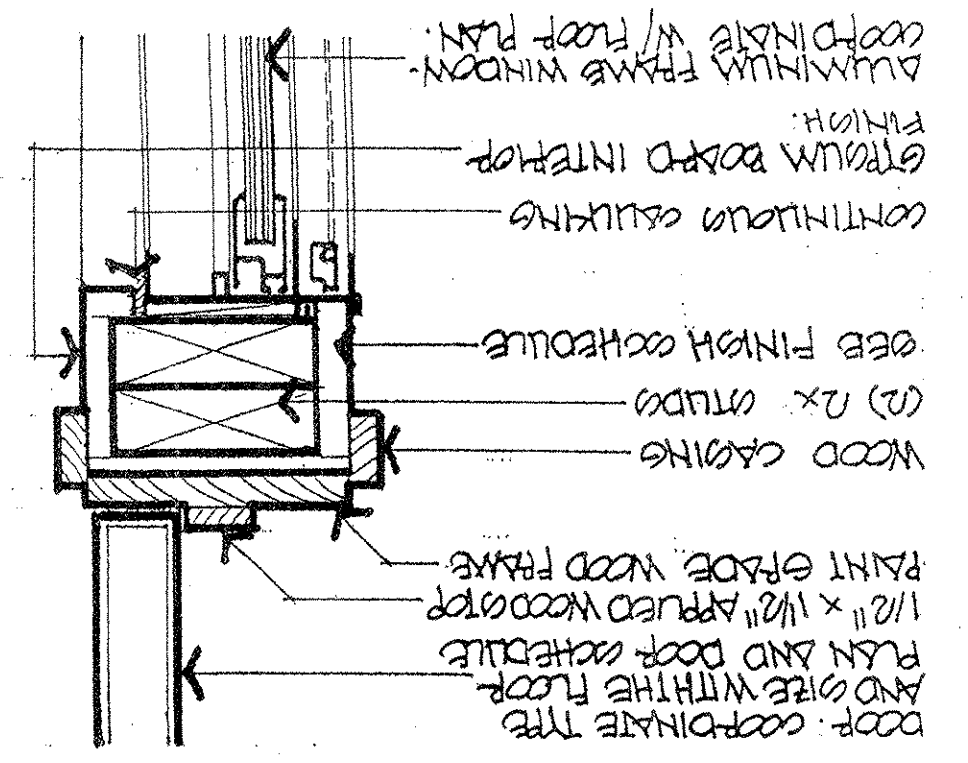
11 WINDOW JAMB



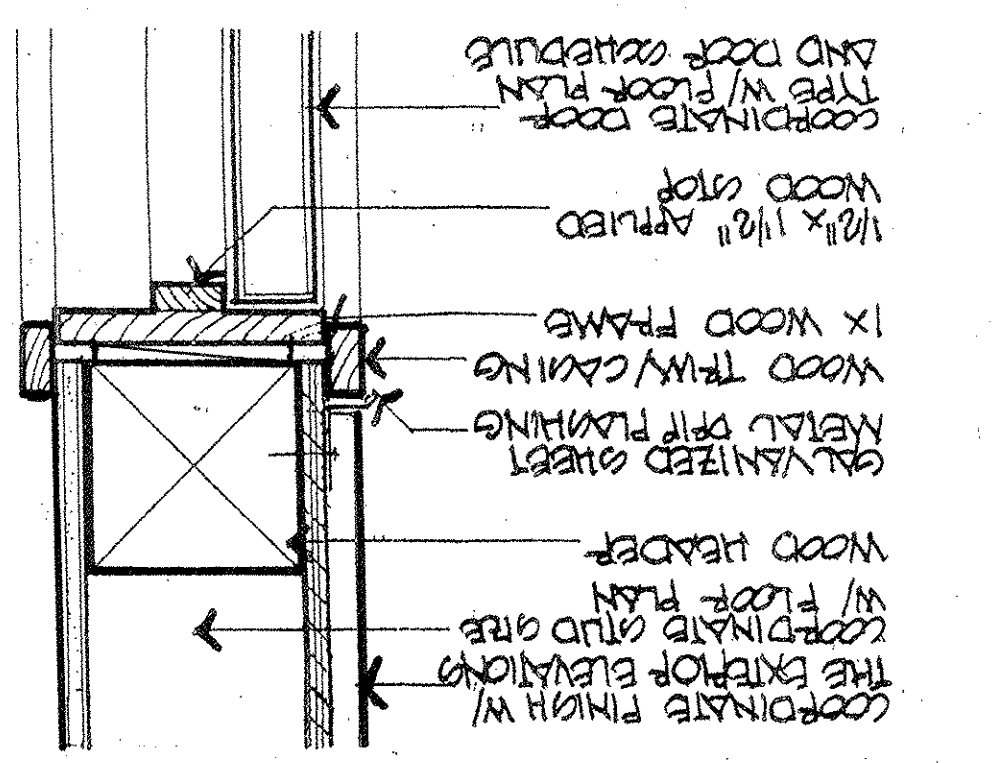
14 RAISED DOORWAY LANDING



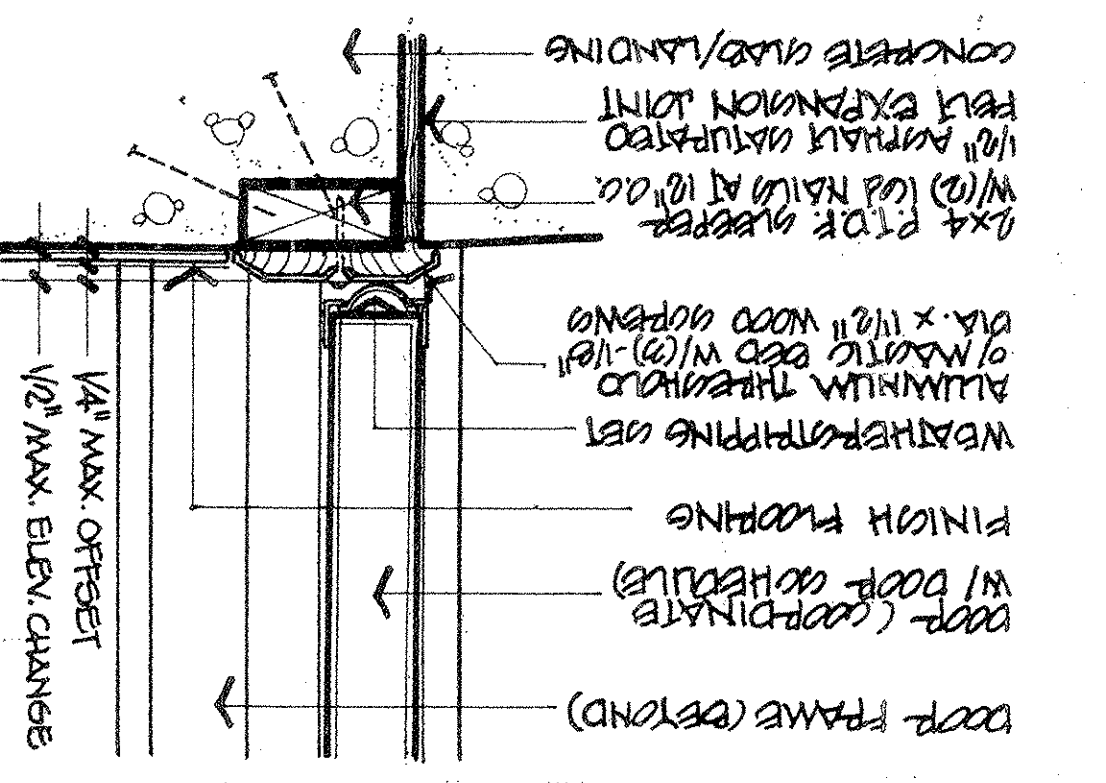
10 DOOR-WINDOW JAMB



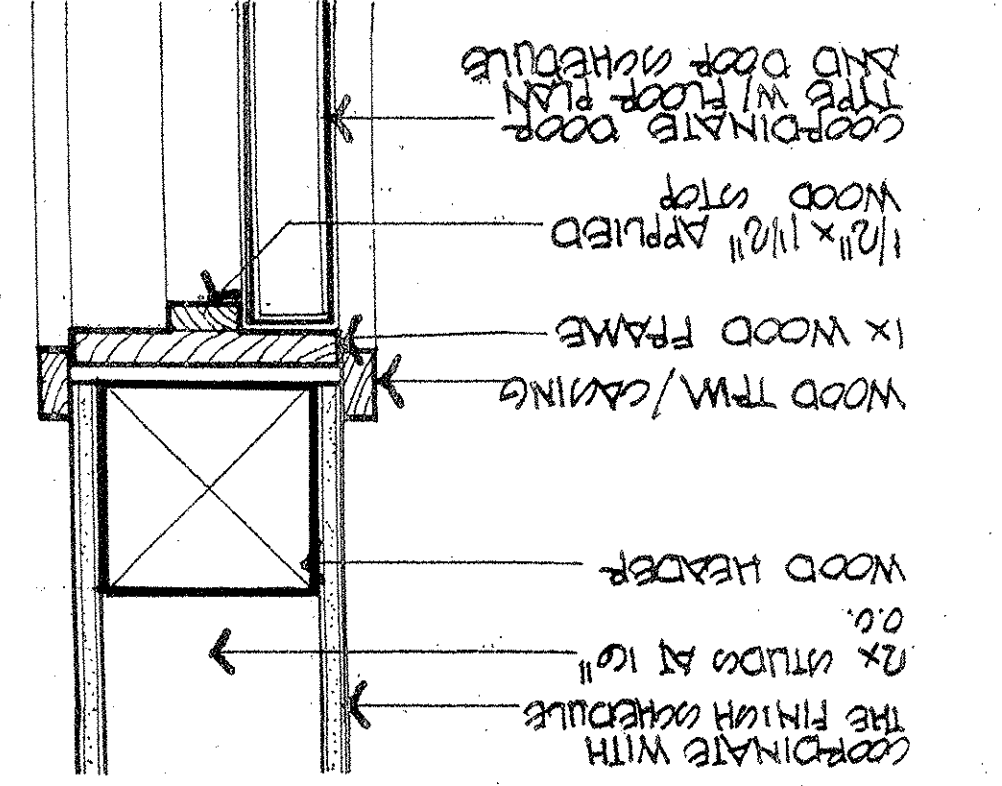
6 EXTERIOR DOOR HEAD



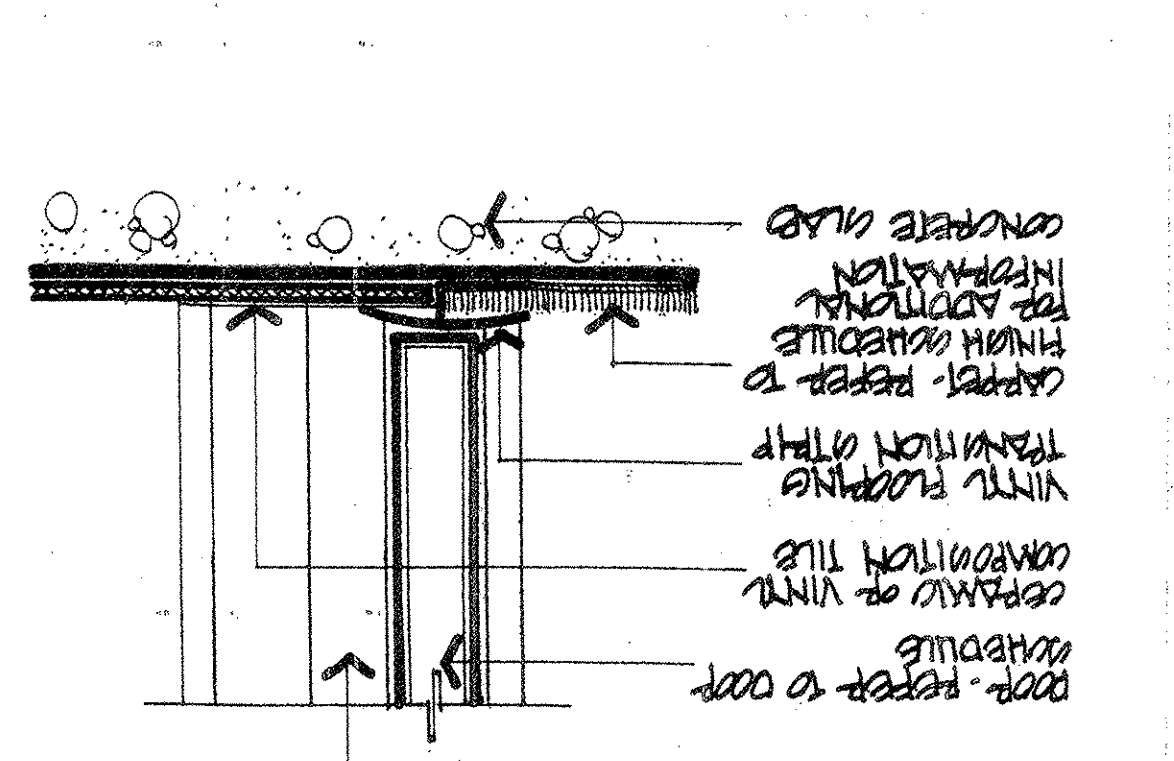
7 THRESHOLD CONDITION



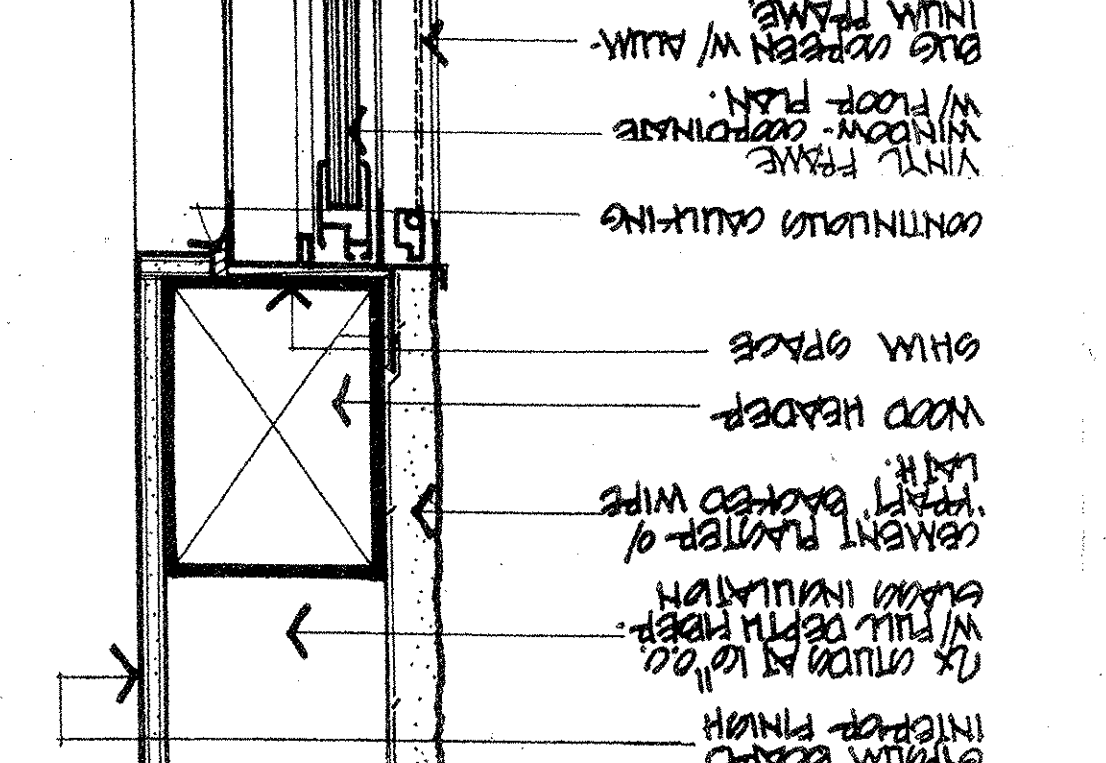
8 INTERIOR DOOR HEAD



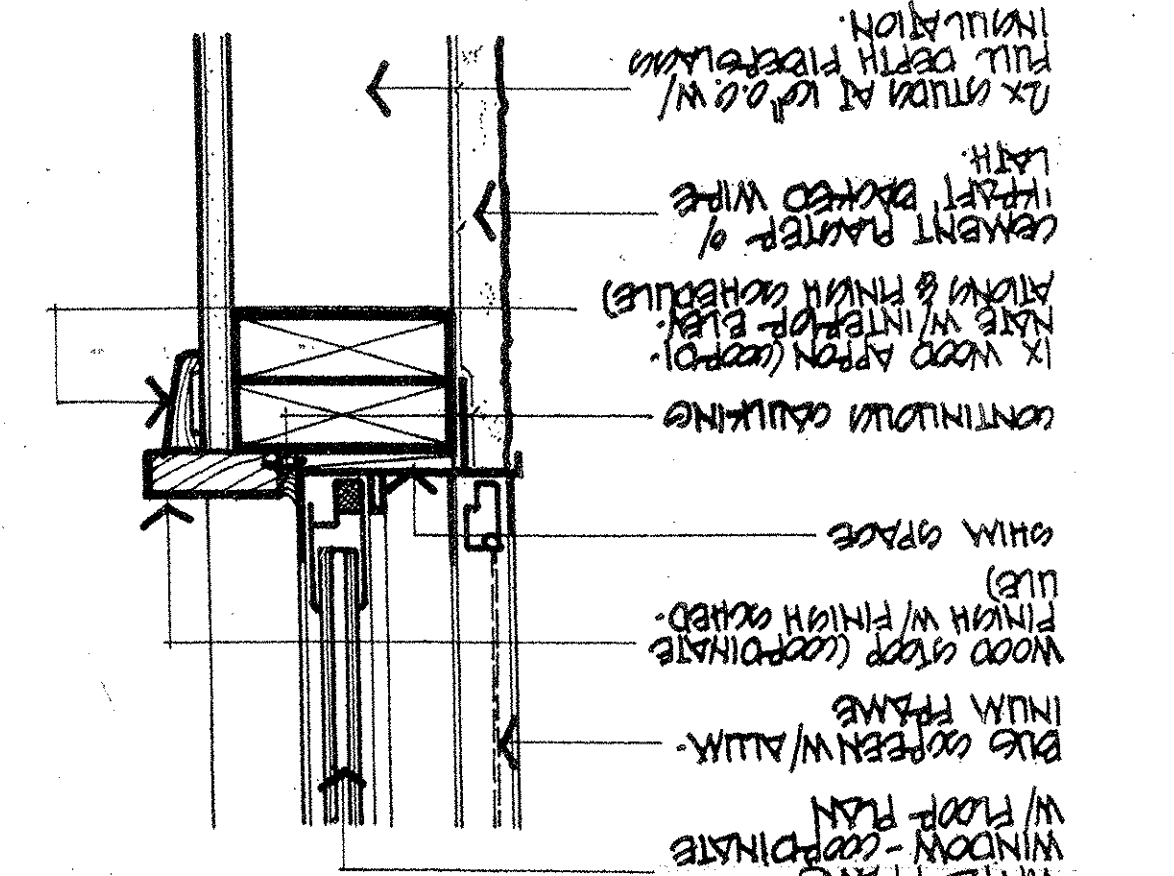
9 INTERIOR THRESHOLD



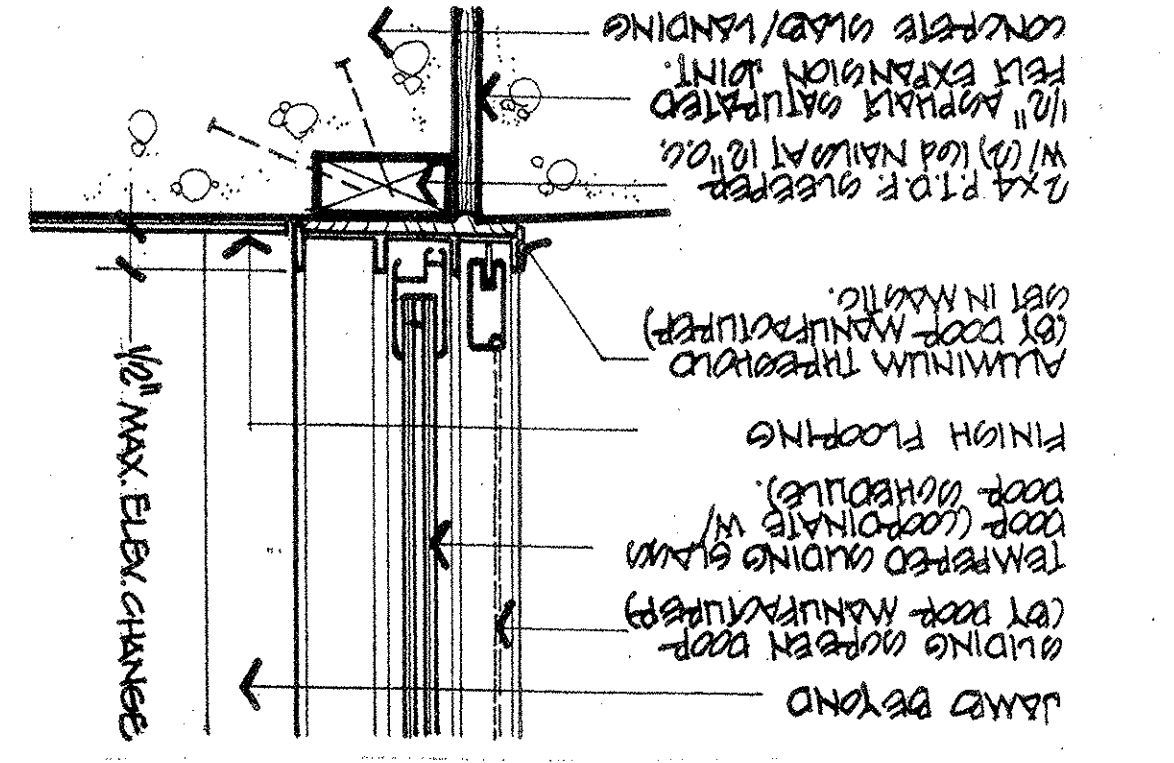
2 WINDOW HEAD (JAMB SIMILAR)



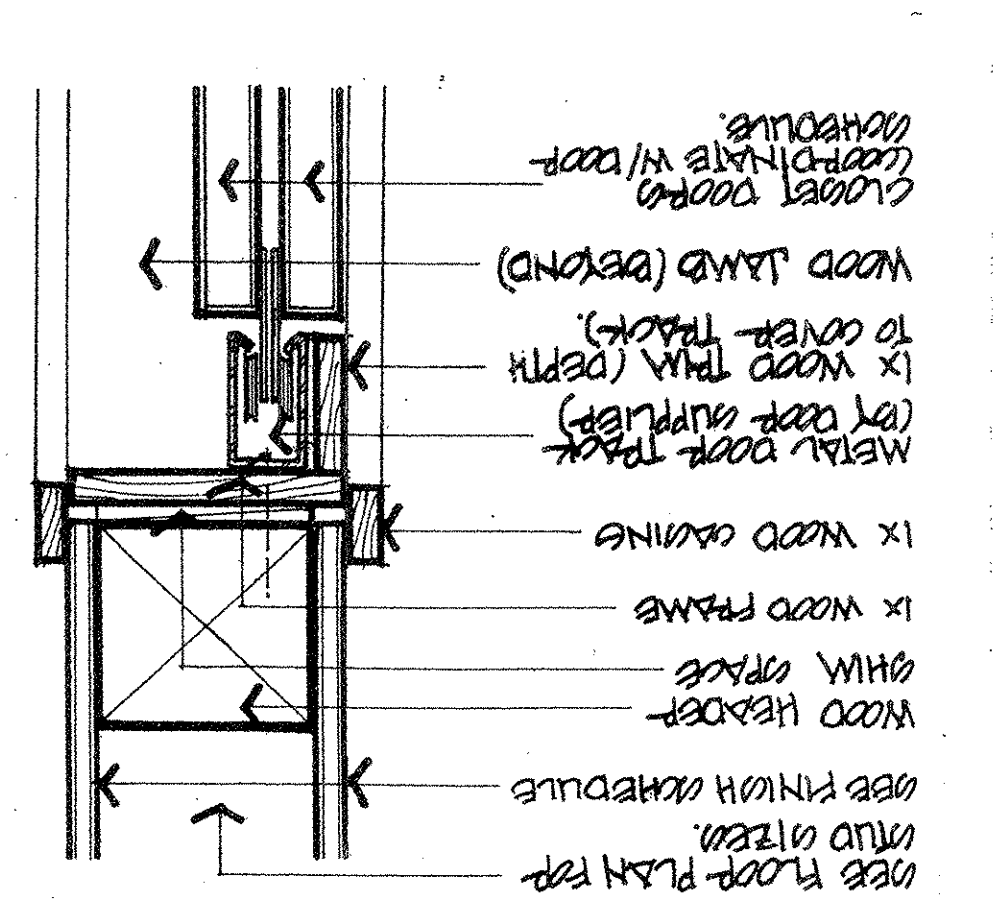
3 WINDOW SILL DETAIL



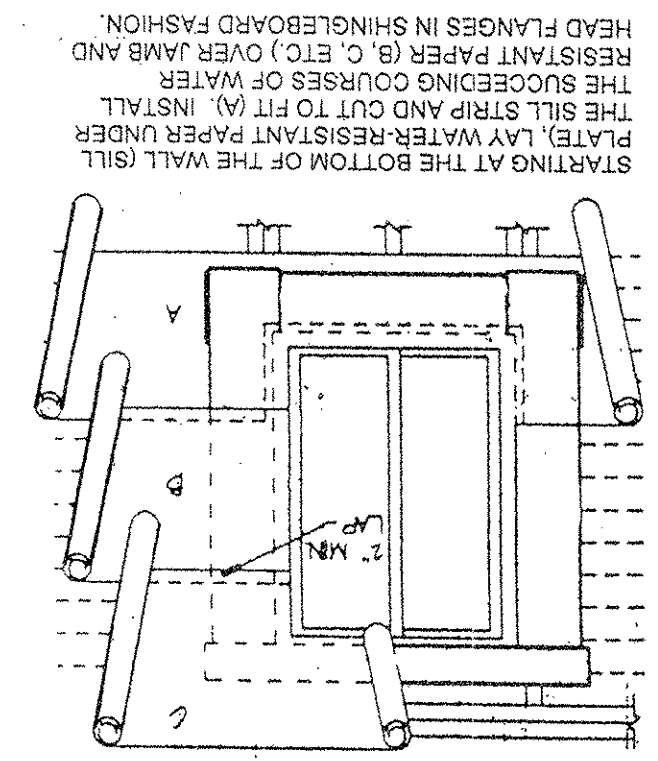
4 THRESHOLD CONDITION



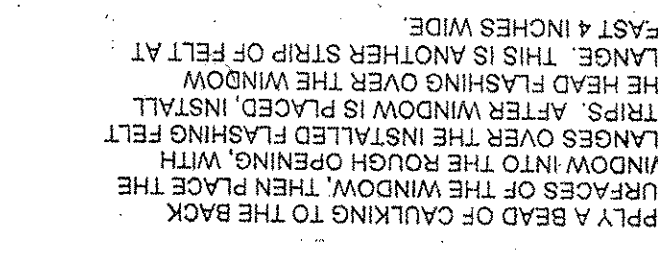
5 DOOR HEAD (JAMB SIMILAR)



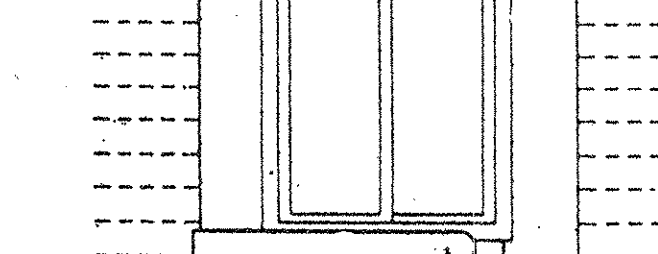
1 FENESTRATION FLASHING



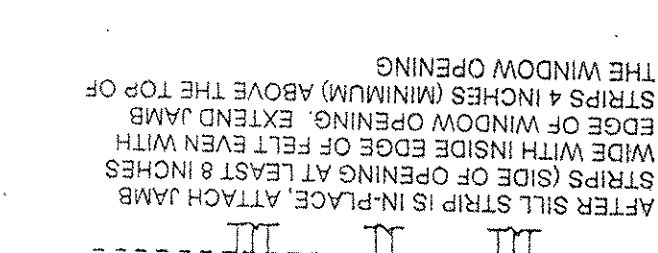
STEP 4



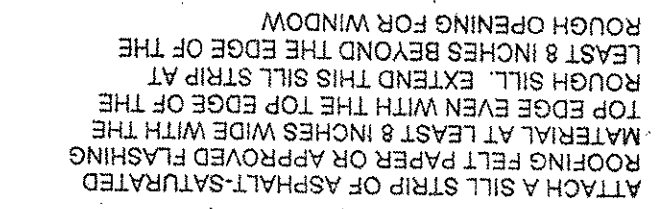
STEP 3



STEP 2



STEP 1



STEP 1

Project Name: LAMBE APARTMENTS  
 Scale: AS NOTED  
 Project Number: 240723  
 Date: 8/23/05  
 Sheet Number: A39

Professional Engineer Seal for Scott A. Vincent, State of California, No. C-15290, Exp. 12/31/05.

PROPOSED APARTMENTS FOR  
**MR. ANTHONY LAMBE**  
 5430 WEST PALO ALTO AVENUE  
 FRESNO, CALIFORNIA 93720

THE VINCENT ARCHITECTURE-PLANNING COMPANY  
 1500 West Shaw, Ste. 304  
 Fresno, California 93711  
 Phone: 559.225.2602