

PROPOSED APARTMENTS FOR:
MR. ANTHONY LAMBE
 5430 WEST PALO ALTO AVENUE
 FRESNO, CALIFORNIA 93720

ARCHITECTURE PLANNING
VINCENT T H E
 1500 West Shaw, Ste. 304
 Fresno, California 93711
 Phone: 559.225.2602
 Revisions: _____
 Date: _____

GARAGE PLANS

MAXIMUM ATTIC AREA

a. AT BUILDING TYPE E	989 S.F.
b. AT BUILDING TYPE F	840 S.F.

VENTILATION REQUIRED:

a. AT BUILDING TYPE E	989 S.F. X 144" =
b. AT BUILDING TYPE F	840 S.F. X 144" =

VENTILATION PROVIDED:

a. AT BUILDING TYPE E	3-1/2" X 22" EAVE VENTS (48 SQ. IN. PER VENT)
b. AT BUILDING TYPE F	3-1/2" X 22" EAVE VENTS (48 SQ. IN. PER VENT)
a. AT BUILDING TYPE E	5 VENTS
b. AT BUILDING TYPE F	4 VENTS

PLVOX MODEL 2000 EYEBROW VENTS (60 SQ. IN. PER VENT)

ATTIC VENTILATION
 ATTIC VENTILATION REQUIREMENTS HAVE BEEN CALCULATED ACCORDING TO THE 1/3000 METHOD AS DESCRIBED IN THE UNIFORM BUILDING CODE WITH 50% OF VENTILATION PROVIDED 3'-0" (MINIMUM) ABOVE EAVE VENTS.

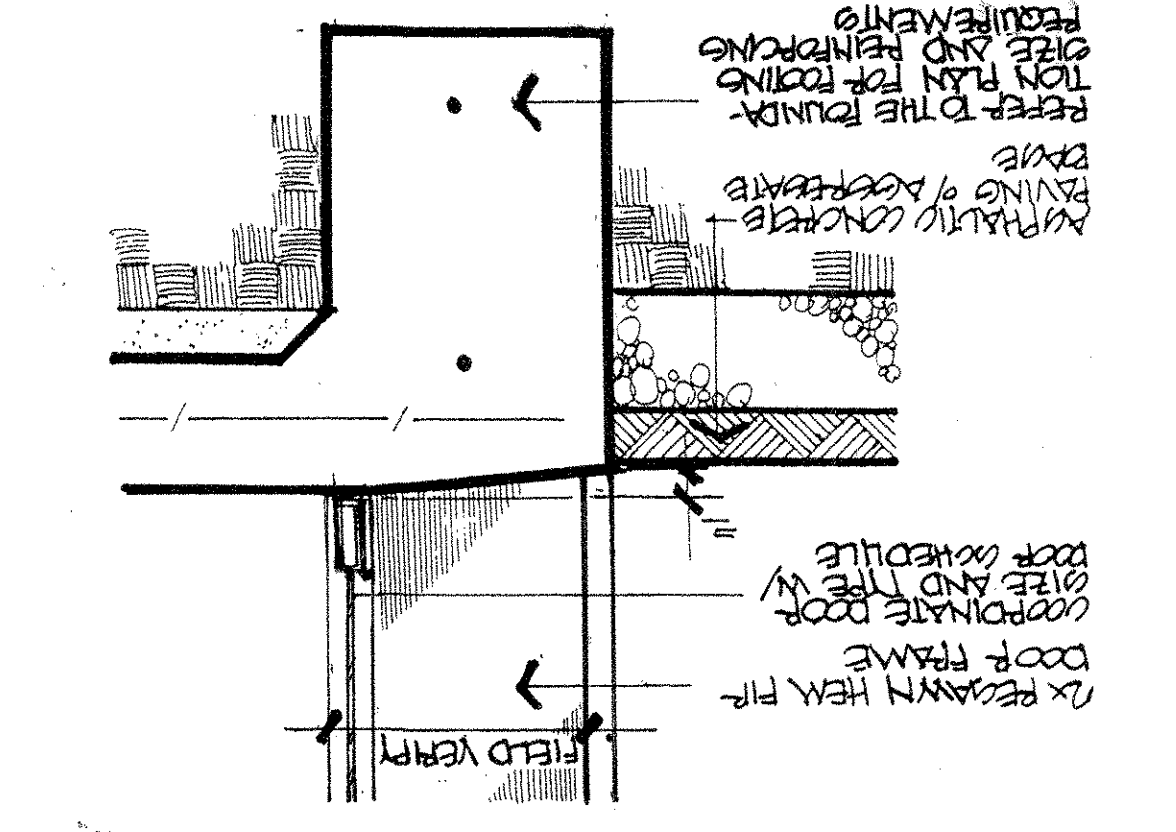
- 1 ASPHALTIC CONCRETE PAVING INSTALLED OVER CLASS 11 AGGREGATE BASE OVER NATIVE SOIL COMPACTED TO 90% COORDINATE PLANNING SECTION WITH THE GRADING PLAN AND PROJECT SOILS REPORT. REFER TO SITE PLAN, SHEET A-1 FOR ADDITIONAL INFORMATION.
- 2 3-1/2" THICK COMPACTED NATIVE SOIL / TYPICAL.
- 3 SLOPE GARAGE SLAB OUT DOOR AT 1/8" INCH PER FOOT (MINIMUM) / TYPICAL.
- 4 WOOD FRAMED EXTERIOR WALLS. PROVIDE 2x4 DOUGLARS FIR NO. 2 AND BETTER STUDS AT 16 INCHES ON-CENTER WITH 7/8" INCH THICK THREE COAT CENTRION PLASTER EXTERIOR FINISH INSTALLED OVER "KRAFT" BACKED WRE LTH OVER BUILDING PAPER INSTALLED PER CBC TABLE 25-1 AND 5/8" TYPE X GYPSUM BOARD INTERIOR FINISH. PROVIDE 1/2" ANCHOR BOLTS X 10" LONG ANCHOR BOLTS AT 10 INCHES ON-CENTER / TYPICAL.
- 5 INTERIOR WALLS: PROVIDE 2x4 DOUGLARS FIR STANDARD AND BETTER STUDS AT 16 INCHES ON-CENTER WITH 5/8" INCH THICK TYPE X GYPSUM BOARD FINISH EACH SIDE. NAIL GYPSUM BOARD WITH 5d COLORED NAILS AT 4 INCHES ON-CENTER WITH EDGES BLOKED PER CBC TABLE 25.1. PROVIDE 1/2" DIAMETER X 10" LONG ANCHOR BOLTS AT 48 INCHES ON-CENTER / TYPICAL.
- 6 CORNER METAL CLAD SIX PANEL DOOR WITH GRADE WOOD FRAME AND THRESHOLD / TYPICAL. PROVIDE 1/2" INCH MAXIMUM ELEVATION CHANGE AT GARAGE DOOR SUPPLIER TO PROVIDE GARAGE DOOR OPENER AND (2) CONTROLLERS PER GARAGE / TYPICAL.
- 7 INDICATES LOCATION OF 9'-0" WIDE X 7'-0" HIGH OVERHEAD GARAGE DOOR. CONTROLLERS PER GARAGE / TYPICAL.
- 8 INDICATES LOCATION OF 18'-0" WIDE X 7'-0" HIGH OVERHEAD GARAGE DOOR. GARAGE DOOR SUPPLIER TO PROVIDE GARAGE DOOR OPENER AND (2) CONTROLLERS PER GARAGE / TYPICAL.
- 9 SHADING INDICATES LOCATION OF 12" X 12" CONTINUOUS CONCRETE FOOTINGS WITH (1) #4 BAR CONTINUOUS HORIZONTAL TOP AND BOTTOM / TYPICAL.
- 10 5-1/2" INCH WIDE CONCRETE CURB (HEIGHT VARIES WITH SLOPE OF SLAB) APPLIED PERPENDICULAR TO ROOF FRAMING WITH 8d COMMON NAILS AT 6 INCHES ON-CENTER AND BOUNDARY AND 12 INCHES ON-CENTER. (NOTE: STRUCT 1 STAMPED ORIENTED STRAND BOARD MAY BE USED IN LIEU OF PLWOOD) / TYPICAL.
- 11 2x8 RESAWN HEH FIR FASCIA WITH 1x3 STARTER STRIP / TYPICAL.
- 12 INDICATES LOCATION OF PLYCO MODEL 2000 EYEBROW VENTS / TYPICAL.
- 13 INSTALL PRE-FABRICATED PRESS-PLATE WOOD STEP DOWN TRUSSES AT 24 INCHES ON-CENTER / TYPICAL.
- 14 INSTALL PRE-FABRICATED PRESS-PLATE WOOD HIP GIRDER TRUSSES AT 24 INCHES ON-CENTER / TYPICAL.
- 15 INSTALL 2x4 PLAT AT 1/3 SPANS OF TRUSSES AT TOP AND BOTTOM CHORDS WITH 2-16d NAILS PER CHORD. CAP SPICE 30 INCHES MINIMUM / TYPICAL.
- 16 INSTALL 2x FULL DEPTH CONTINUOUS RIDGE BLOCKING AS INDICATED / TYPICAL.
- 17 INSTALL 4x12 DOUGLARS FIR NO. 2 HEADER / TYPICAL.
- 18 INSTALL 3 1/8" X 12" 2x4 1/4 GW LAMINATED HEADER / TYPICAL.
- 19 APPLIED PERPENDICULAR TO ROOF FRAMING WITH 8d COMMON NAILS AT 6 INCHES ON-CENTER AND BOUNDARY AND 12 INCHES ON-CENTER.
- 20 2x8 RESAWN HEH FIR FASCIA WITH 1x3 STARTER STRIP / TYPICAL.
- 21 INDICATES LOCATION OF PLYCO MODEL 2000 EYEBROW VENTS / TYPICAL.
- 22 INDICATES LOCATION OF PLYCO MODEL 2000 EYEBROW VENTS / TYPICAL.
- 23 INSTALL PRE-FABRICATED PRESS-PLATE WOOD STEP DOWN TRUSSES AT 24 INCHES ON-CENTER / TYPICAL.
- 24 INSTALL PRE-FABRICATED PRESS-PLATE WOOD HIP GIRDER TRUSSES AT 24 INCHES ON-CENTER / TYPICAL.
- 25 INSTALL PRE-FABRICATED PRESS-PLATE WOOD STEP DOWN TRUSSES AT 24 INCHES ON-CENTER / TYPICAL.
- 26 BOUNDARY NAIL PLYWOOD TO TOP CHORD WITH 8d COMMON NAILS AT 6 INCHES ON-CENTER / TYPICAL.

KEYNOTES

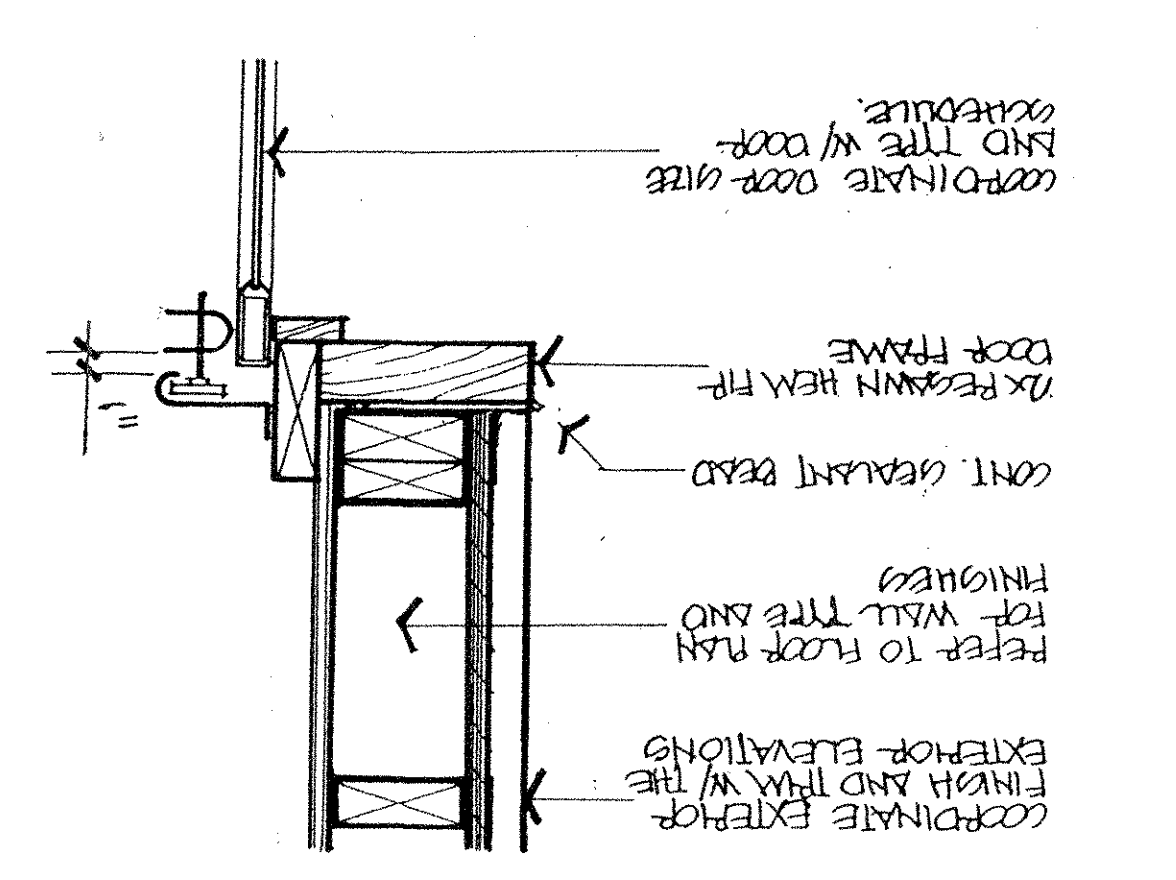
HOLDOWN SYMBOLS

SYMBOL	DESCRIPTION
(Symbol: Circle with crosshair)	SIMPSON BRAND 42 HOLDOWN WITH (16)-8d COMMON NAILS TO A FULL HEIGHT DOUBLE STUD. PROVIDE 6 INCH MINIMUM CORNER OFFSET. COORDINATE INSTALLATION WITH DETAIL 8, SHEET A-36.

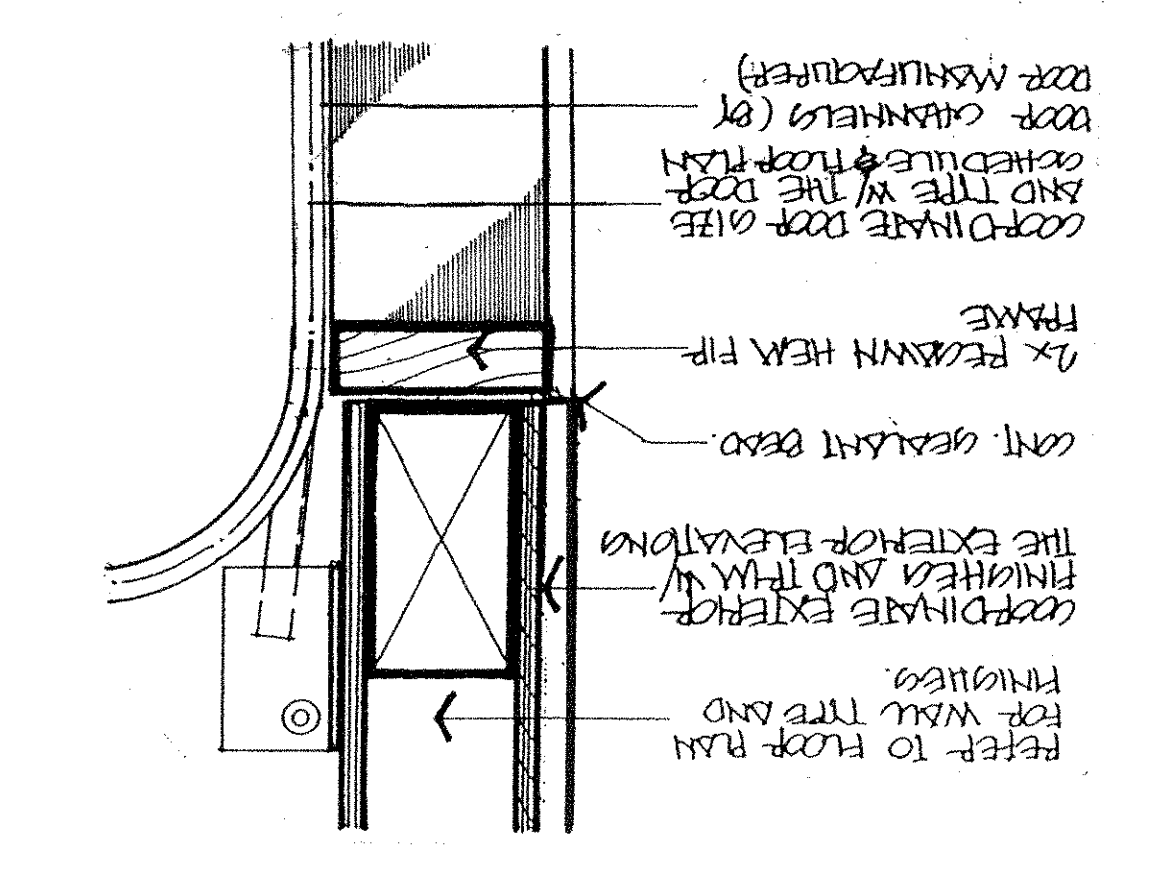
3 OVERHEAD DOOR SILL



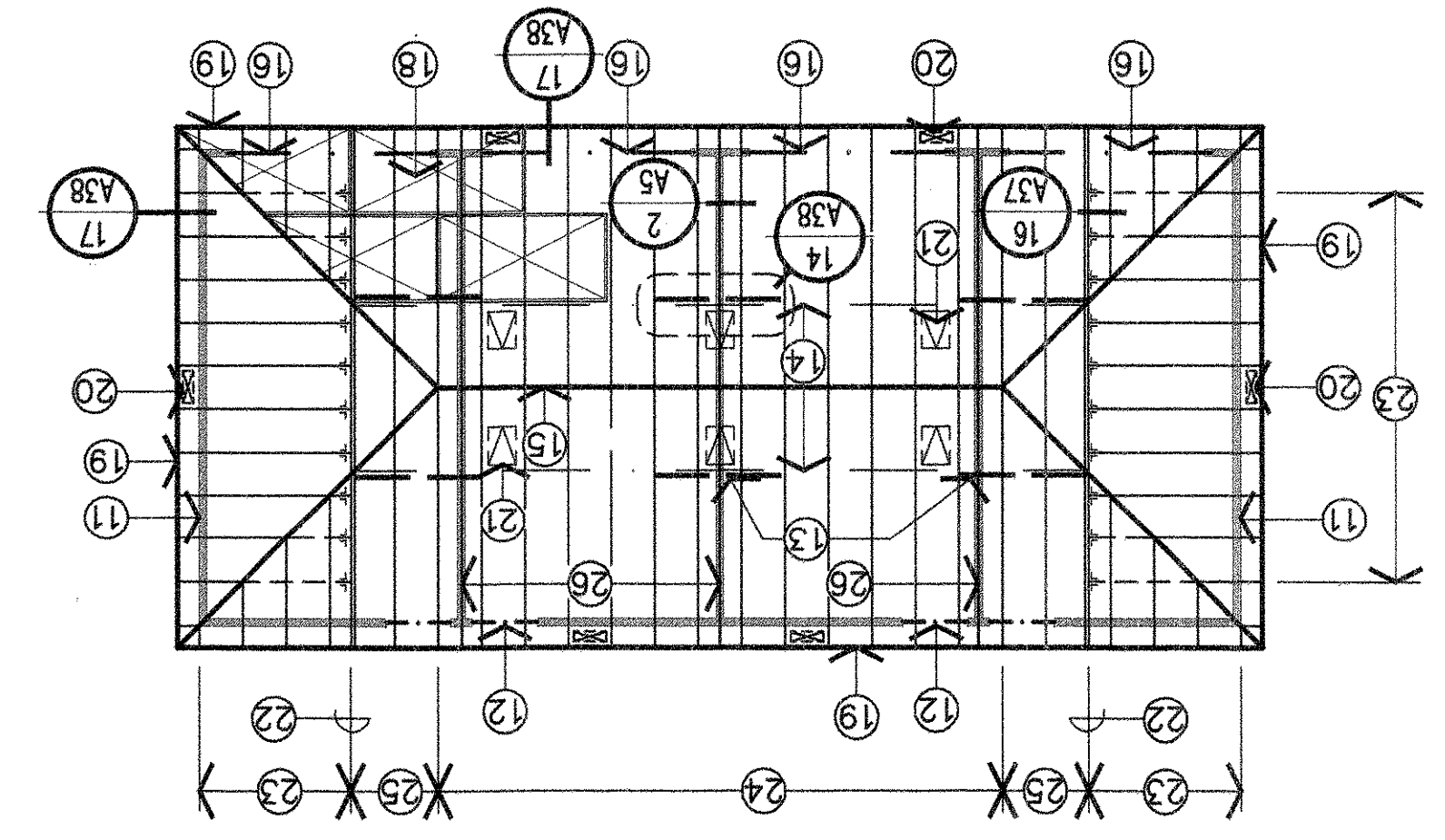
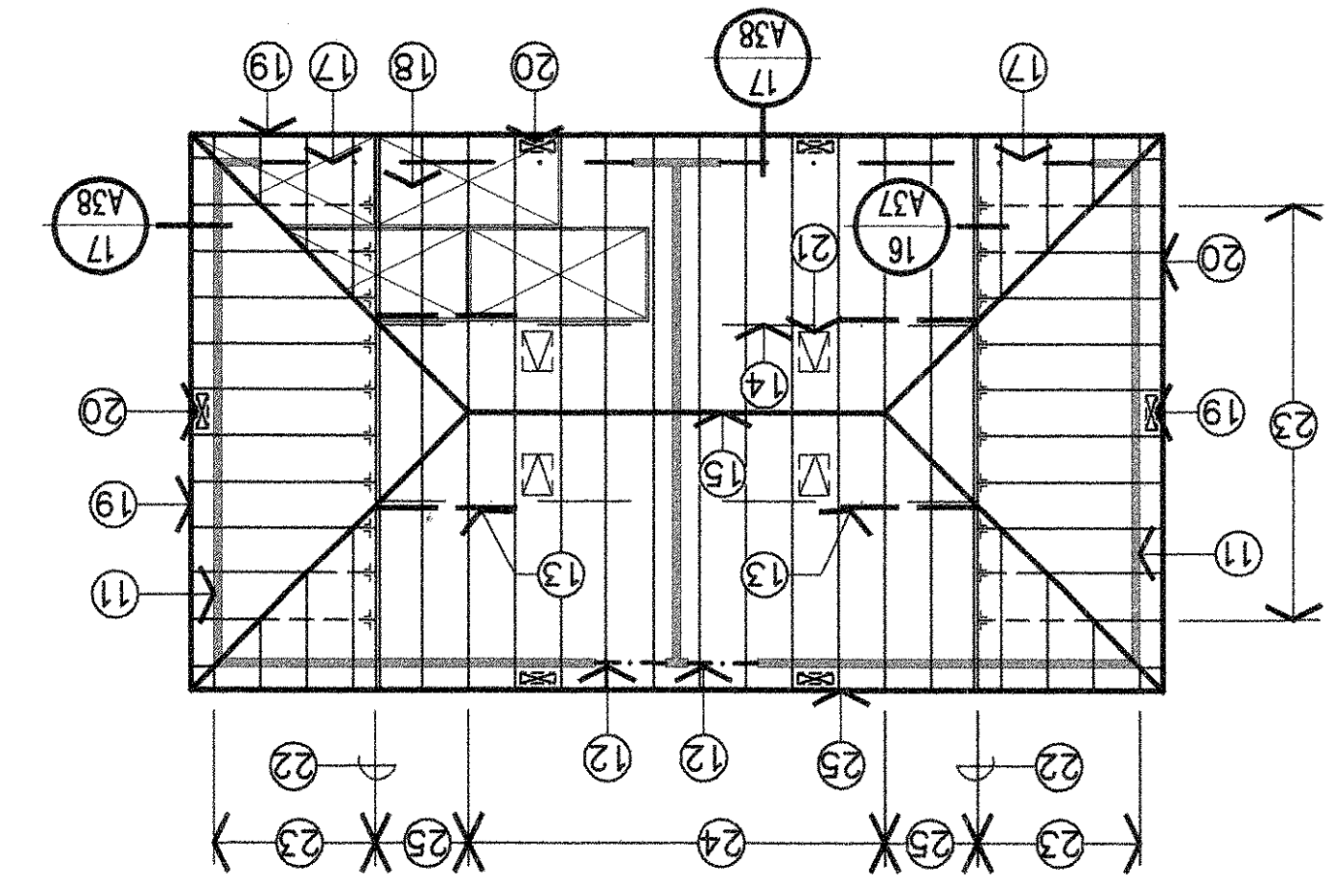
2 OVERHEAD DOOR JAMB



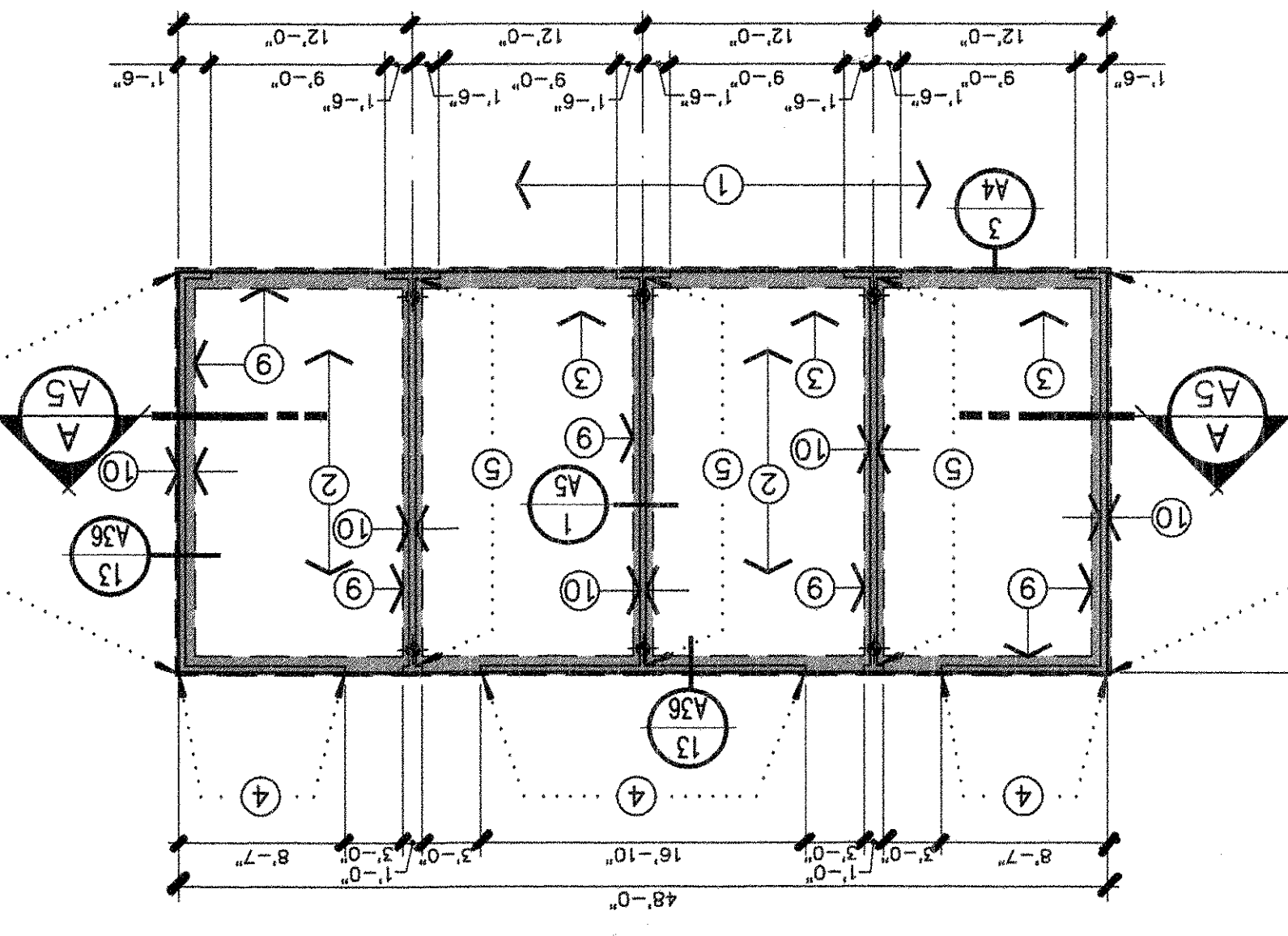
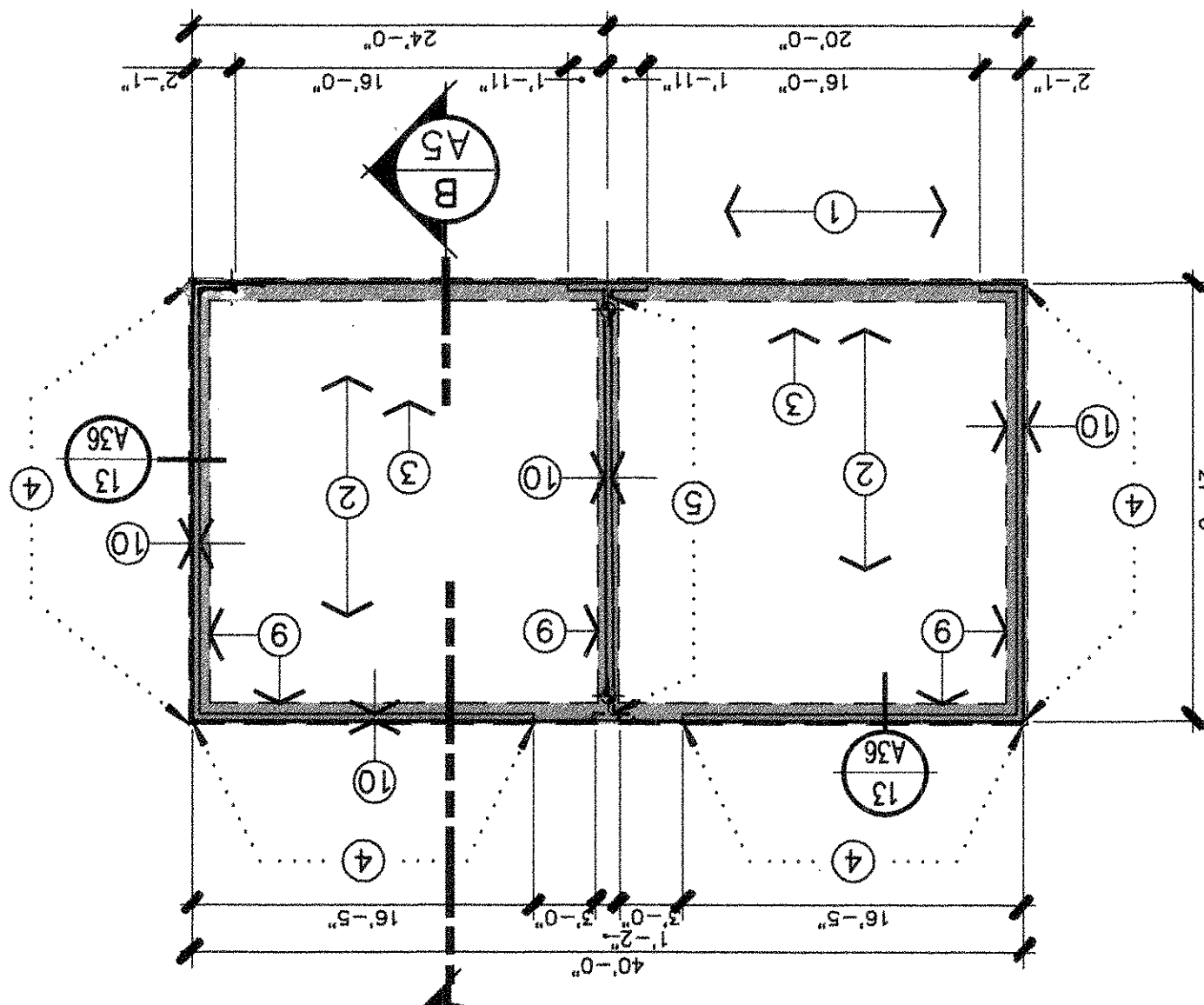
1 OVERHEAD DOOR HEAD



ROOF FRAMING PLANS



FOUNDATION PLANS



FLOOR PLANS

